



For  
SIGN  
GRAPHICS

3.2M Grand Format LED UV Inkjet Printer

**SIJ-320UV**

**Mimaki™**

## LUS-120: Newly developed, high-performance UV curing ink

The newly developed, high-performance LUS-120 UV curing ink possesses superior durability and flexibility. These two opposite properties provide beautiful and durable printing on flexible banner materials that cannot be laminated.

### Specifications

Item	SIJ-320UV	
Head	On-demand piezo head (4 staggered printheads)	
Print resolution	300 dpi, 600 dpi, 900 dpi and 1,200 dpi	
Ink droplet size	Minimum: 7 pl Maximum: 36 pl	
Head gap (Manual adjustment)	1.7 mm / 1.9 mm / 2.6 mm / 3.3 mm (Distance between the platen and the print head)	
Ink	Type	LED-UV ink LUS-120
	Color	C, M, Y, K
	Packaging	1 liter ink bottle Ink can be filled up to 3 liters per ink container of the printer.
Maximum print width	3,200 mm	
Maximum media width	3,250 mm (Twin rolls printing with a small drive shaft: 1,524 mm x 2)	
Minimum media width	210 mm	
Media thickness	1.0 mm or less	
Roll outer diameter	Large drive shafts: $\Phi$ 250 mm or less Small drive shaft with roll holders: $\Phi$ 180 mm or less	
Roll weight	Large drive shafts: 100 kg or less Small drive shaft with roll holders: 25 kg or less	
Dimensions (W x D x H)	5,410 mm x 995 mm x 1,440 mm	
Shipping dimensions (W x D x H)	5,750 mm x 1,140 mm x 1,210 mm	
Weight	850 kg	
Power supply	AC 200 – 240 V $\pm$ 10% 50/60 Hz $\pm$ 1 Hz, 15 A or less	
Power consumption	3.6 kW or less	
Operational environment	Temperature	20 – 30 °C (68 – 86 °F)
	Humidity	35 – 65%Rh (No condensing)
	Temperature accuracy	20 – 25 °C (68 – 77 °F)
	Temperature gradient	Less than $\pm$ 10 °C/h ( $\pm$ 18 °F/h)
	Dust	0.15 mg/m <sup>3</sup> (Equivalent to normal office level)

### Supplies

Item	Color	Item No.	Remarks
LED-UV Ink LUS-120	Cyan	LUS12-C-BA	1L ink bottle
	Magenta	LUS12-M-BA	
	Yellow	LUS12-Y-BA	
	Black	LUS12-K-BA	

### Options

Item	Item No.	Remarks
Soft media feeding kit	OPT-J0400	
SIJ small take-up unit	OPT-J0394	
Take-up roll holder unit	OPT-J0409	
3.2 m roll shaft unit	OPT-J0410	

Software RIP combining usability and high performance

**Raster Link 6** Bundled Item

●Some of the samples in this catalogue are artificial renderings. ●Specifications, design and dimensions stated in this catalogue may be subject to change without notice (for technical improvements, etc). ●The corporate names and merchandise names written on this catalogue are the trademark or registered trademark of the respective corporations. ●Inkjet printers print using extremely fine dots, so colors may vary slightly after replacement of the printing heads. Also note that if using multiple printer units, colors could vary slightly from one unit to other unit due to slight individual differences.

**Mimaki** MIMAKI ENGINEERING CO., LTD.  
2182-3 Shigeno-otsu, Tomi-city, Nagano 389-0512, Japan  
Tel: +81-268-78-2288 trading@mimaki.jp

### Mimaki Global Network

USA	MIMAKI USA, INC.	Europe	MIMAKI EUROPE B.V.
Brazil	MIMAKI BRASIL COMERCIO E IMPORTACAO LTDA	Indonesia	PT. MIMAKI INDONESIA
India	MIMAKI INDIA PRIVATE LIMITED	Singapore	MIMAKI SINGAPORE PTE. LTD.
Taiwan	MIMAKI ENGINEERING (TAIWAN) CO.,LTD.	China	SHANGHAI MIMAKI TRADING CO.,LTD.

DB10332-07



Dynamic & Intelligent Production



**Mimaki**  
Green Technology

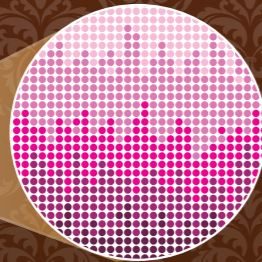
The totally new SIJ-320UV grand-format LED-UV inkjet printer is a high-performance printer developed using Mimaki's concentrated inkjet technologies to provide good quality printing with a maximum printable width of 3.2 m.

# Dynamic & Intelligent Production

## Anti-banding system—Mimaki Advanced Pass System (MAPS) 4



MAPS ON



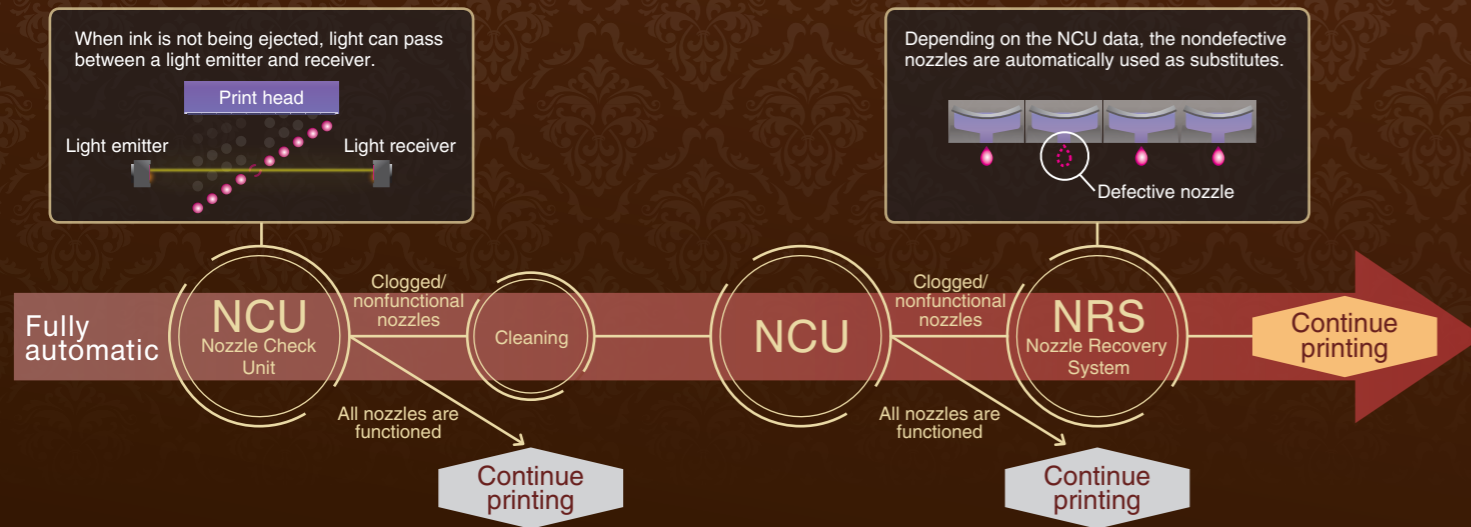
Mimaki's unique MAPS3 anti-banding system has been improved to MAPS4. Unwanted visible banding on the swath boundaries is reduced by overprinting between swaths with a reduced number of ink droplets.



MAPS OFF

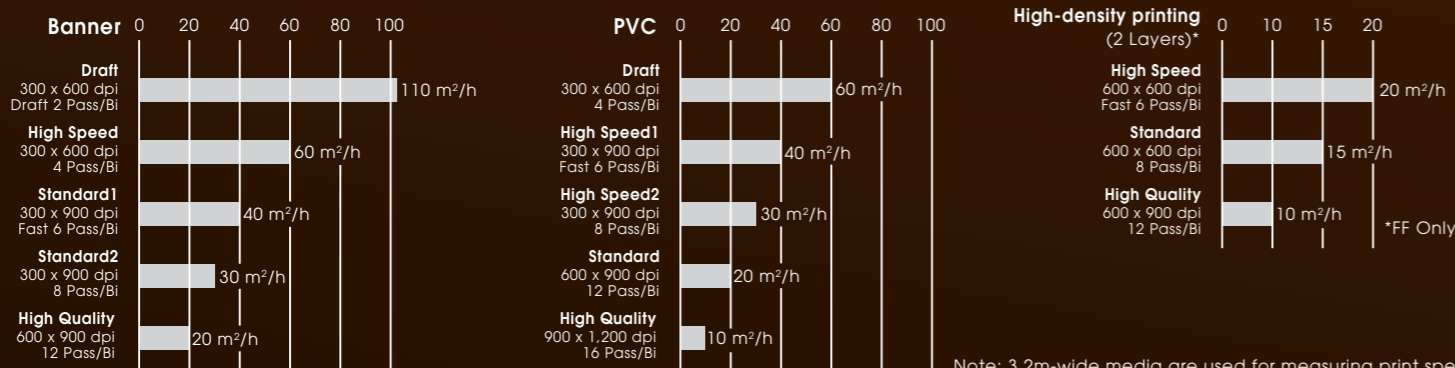
## Nozzle Check Unit (NCU) and Nozzle Recovery System (NRS) ensure stable printing operation

The NCU detects and cleans clogged nozzles automatically. If clogging is not resolved after cleaning, the NRS selects substitute nozzles to continue the printing operation. These functions allow the printer to maintain productivity until a technician arrives.



## High speed 4-color C M Y K

Super-draft mode allows rapid printing at a maximum printing speed of 110 m<sup>2</sup>/h. High-density print mode is available for front/backlit signage applications.



## Excellent performance

### Efficient twin-roll simultaneous printing

A different print job can be printed on each roll simultaneously

Taking advantage of the 3,200-mm printing width, two media rolls can be mounted for simultaneous printing. Different print jobs (or the same print job) can be printed on two separate rolls. The user can select the preferred width separately for each roll, within a specified range (210 to 1,524 mm).



### Simple media loading

Rolled media can be easily loaded because of a design improvement. This improvement provides increased safety and reduces the time for preparation.



Easy media loading



Tension release device

### Advanced media feeding mechanism

Newly designed pinch rollers are used for more accurate media transportation to provide high-quality printing.



Newly designed pinch rollers

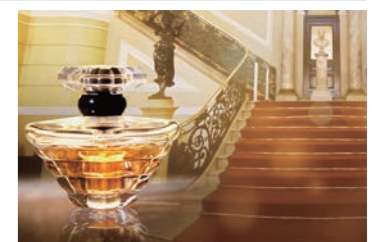
## High quality

### New image-processing technique reduces tone jumps and uneven color printing

Mimaki Fine Diffusion 1 (MFD1) has been recently added to the bundled RasterLink6 RIP software. MFD1 reduces the noise that is generated in image data during image processing and enables the production of better print results without tone jumps or uneven colors.



MFD1 applied



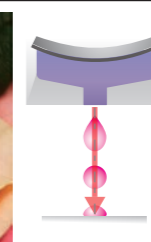
No MFD1

### Superior inkjet technology

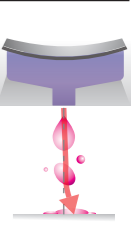
Mimaki's superior inkjet technology accurately places the ink droplets without losing their perfect circularity. This ensures that texts, lines, and edges are clearly and sharply printed.



Waveform control applied



No waveform control



### Smooth-gradation printing

Various ink droplet sizes (large, medium, and small) are precisely placed and exhibit nongrainy, smooth, large-format printing. Dark and light color differences are clearly presented, even in high-speed mode, by utilizing the largest 36 pl droplet size.